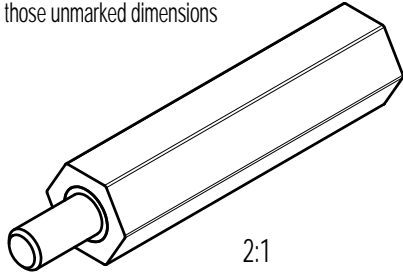
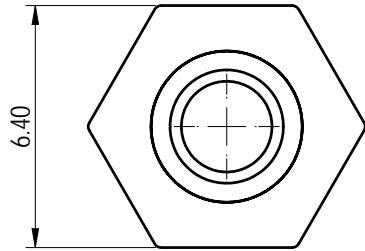


未注公差/General tolerances (mm)														
0	>3	>6	>10	>18	>30	>50	>80	>120	>180	>250	>315	>400	>500	0.1/10
~3	~6	~10	~18	~30	~50	~80	~120	~180	~250	~315	~400	~500		
±0.12	±0.18	±0.22	±0.26	±0.31	±0.37	±0.57	±0.80	±0.93	±1.05	±1.15	±1.60	±2.20	±2.50	±2°

please refer to the 3D model, for those unmarked dimensions

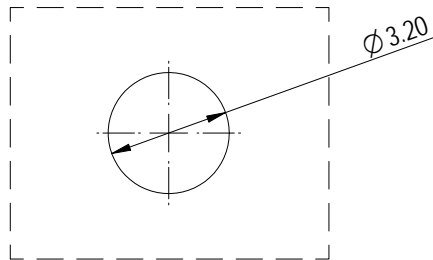


2:1

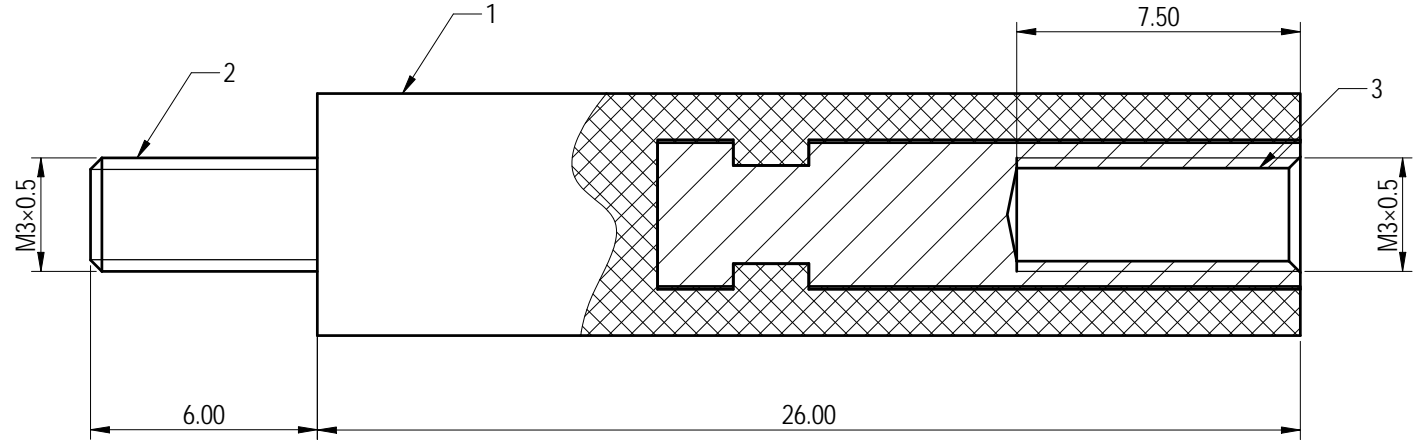


6.40

PCB LAYOUT



Ø 3.20



Note: The A&Z(H) in the name means: A(H) and Z(H).

技术要求/Technical requirements :			
螺丝扭矩/Tightening torque (Nm/Lb.in)		M3.0.6/5.32	
使用温度范围/Operating temperature (°C)		-40~+105	
3	Nut	Steel	M3 Ni Plated
2	Screw	Steel	M3 Ni Plated
1	Housing	PA66+25%GF	UL94V-0
ITEM	NAME OF PART	MATERIAL	NOTES

		MATERIAL:		SURFACE/COLOR:	
		MAT NO./REV: / 00		MAT STATUS: 批量	
APPD: 蓝贵凡	2023.01.12	NAME			
CHKD: 曹利彬	2023.01.12	DG005-01P-1Y-00A&Z(H)			
DRFT: 孙科豪	2023.01.12	DRAWING NO.	TYPE	DRAWING STATUS	SCALE
		200077756	CUSTOMER DRAWING	图纸状态	5:1
					SHEET 1/1

REV	ECN	DESCRIPTION	DRFT	DATE
00				

Transfer or duplication of this document as well as the utilization or communication of its contents are prohibited unless authorized in writing. All rights reserved for patent, utility model or designer registrations. 除专利权明确标注外, 未经许可, 不得复制或传播。 未经授权, 不得复制或传播。 除专利权明确标注外, 未经许可, 不得复制或传播。 除专利权明确标注外, 未经许可, 不得复制或传播。